



AS-BUILT INFORMATION	
CONTRACTOR	DATE
WORK STARTED BY	DATE
INSPECTOR'S ACCEPTANCE BY	DATE
FIELD VERIFICATION BY	DATE
DRAWINGS CORRECTED BY	DATE

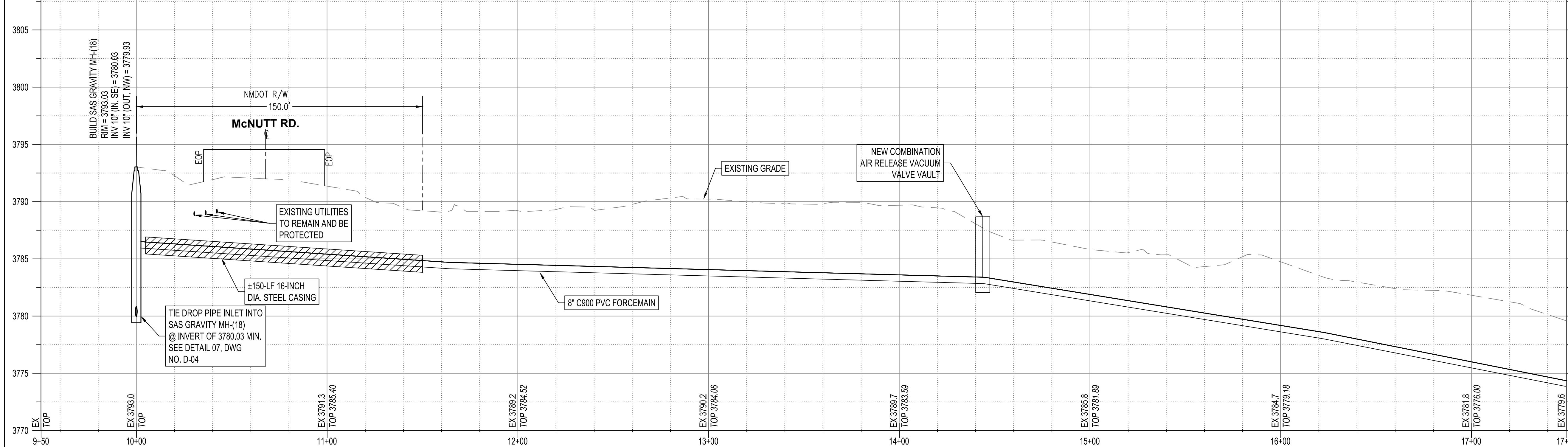
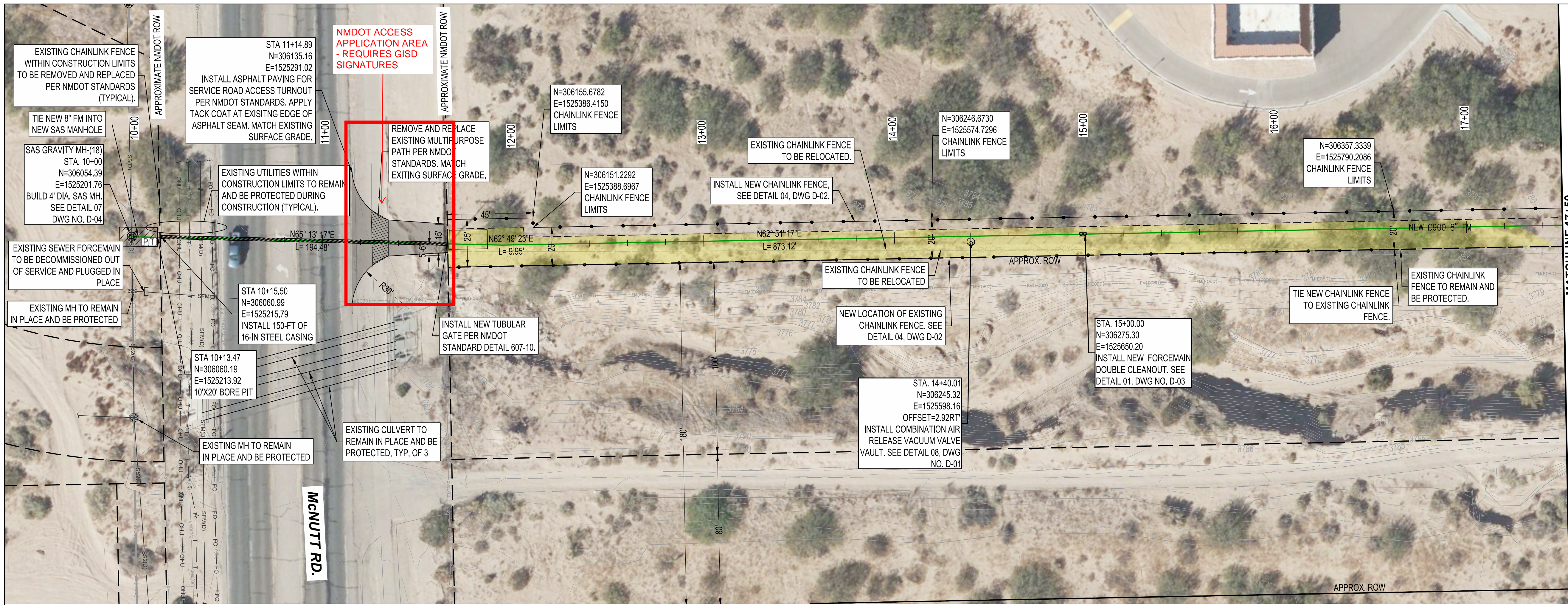
ENGINEER'S SEAL

PRELIMINARY
95%
NOT FOR
CONSTRUCTION

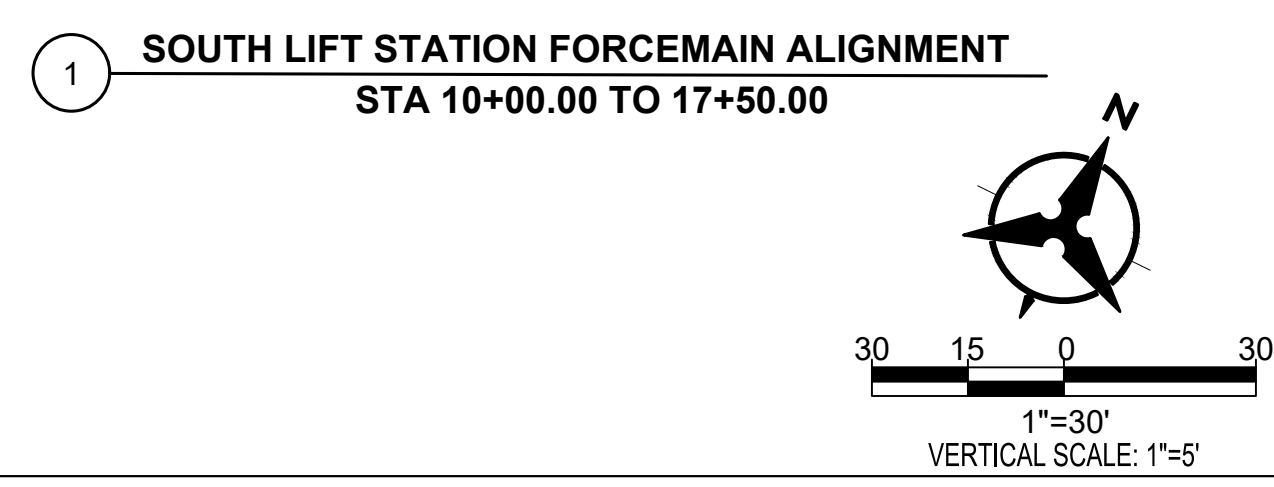
REVISIONS

NO.	DATE	DESCRIPTION

DESIGN	DESIGNED BY	CHECKED BY	DRAWN BY
	J.M.	M.T.	J.S.



- CONSTRUCTION KEYED NOTES:**
- ENGINEER MADE EVERY EFFORT TO CORRECTLY SHOW EXISTING CONDITIONS BASED ON AVAILABLE INFORMATION PROVIDED BY OWNER AND FIELD MEASUREMENTS. CONTRACTOR TO FIELD VERIFY LOCATION OF EXISTING UTILITIES BEFORE CONSTRUCTION. EXISTING UTILITIES WITHIN CONSTRUCTION LIMITS TO REMAIN AND BE PROTECTED DURING CONSTRUCTION UNLESS OTHERWISE NOTED.
 - NEW 8" FORCEMAIN TO INCLUDE CLEANOUTS PER CLEANOUT DETAILS DWG NO. D-03, SHEET 39.
 - NEW 8" FORCEMAIN TO HAVE A MINIMUM COVER OF 4-FT.



CAUTION:
NOTE THAT ALL EXISTING UTILITIES MAY NOT BE SHOWN HEREON AND THAT ANY EXISTING UTILITIES THAT ARE SHOWN ARE IN "APPROXIMATE LOCATION ONLY". IT SHALL BE THE RESPONSIBILITY OF THE CONTRACTOR TO CONTACT ALL THE UTILITY OWNERS AND TO CONDUCT ALL NECESSARY FIELD INVESTIGATIONS PRIOR TO ANY EXCAVATION TO DETERMINE THE ACTUAL LOCATIONS OF UTILITIES AND OTHER IMPROVEMENTS.

CAMINO REAL REGIONAL UTILITY AUTHORITY NORTH WASTEWATER COLLECTION SYSTEM IMPROVEMENTS SOUTH LIFT STATION FORCEMAIN ALIGNMENT STA 10+00.00 TO 17+50.00			
BHI PROJECT NO.	DWG NO.	SHEET	OF
20220316	C-16	21	62

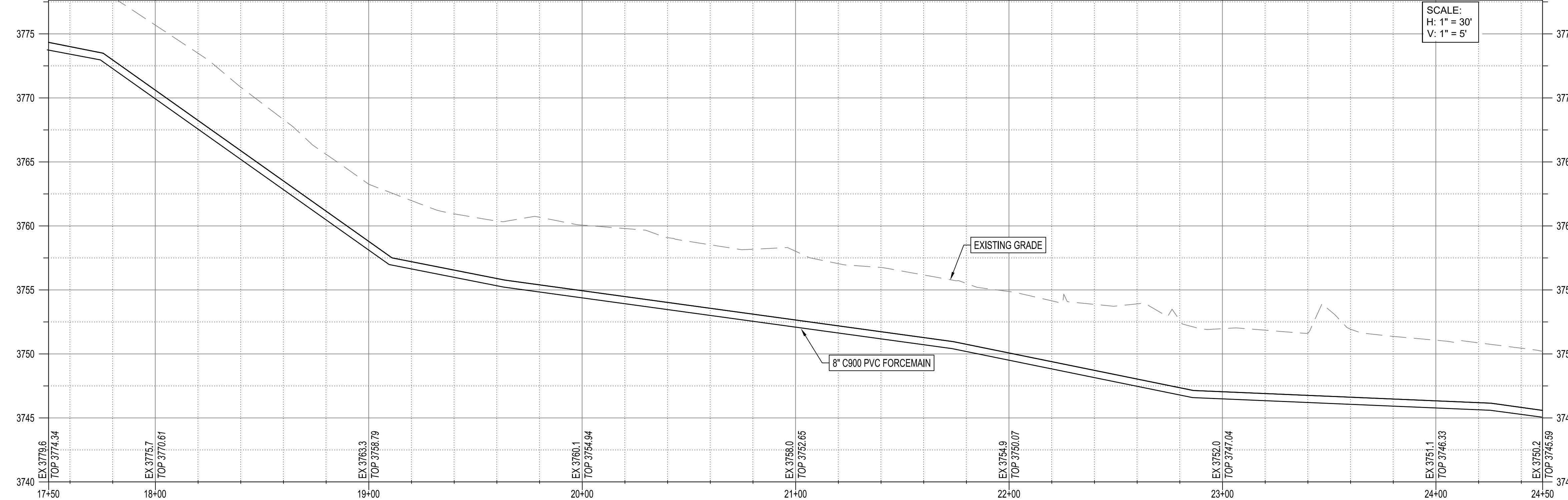
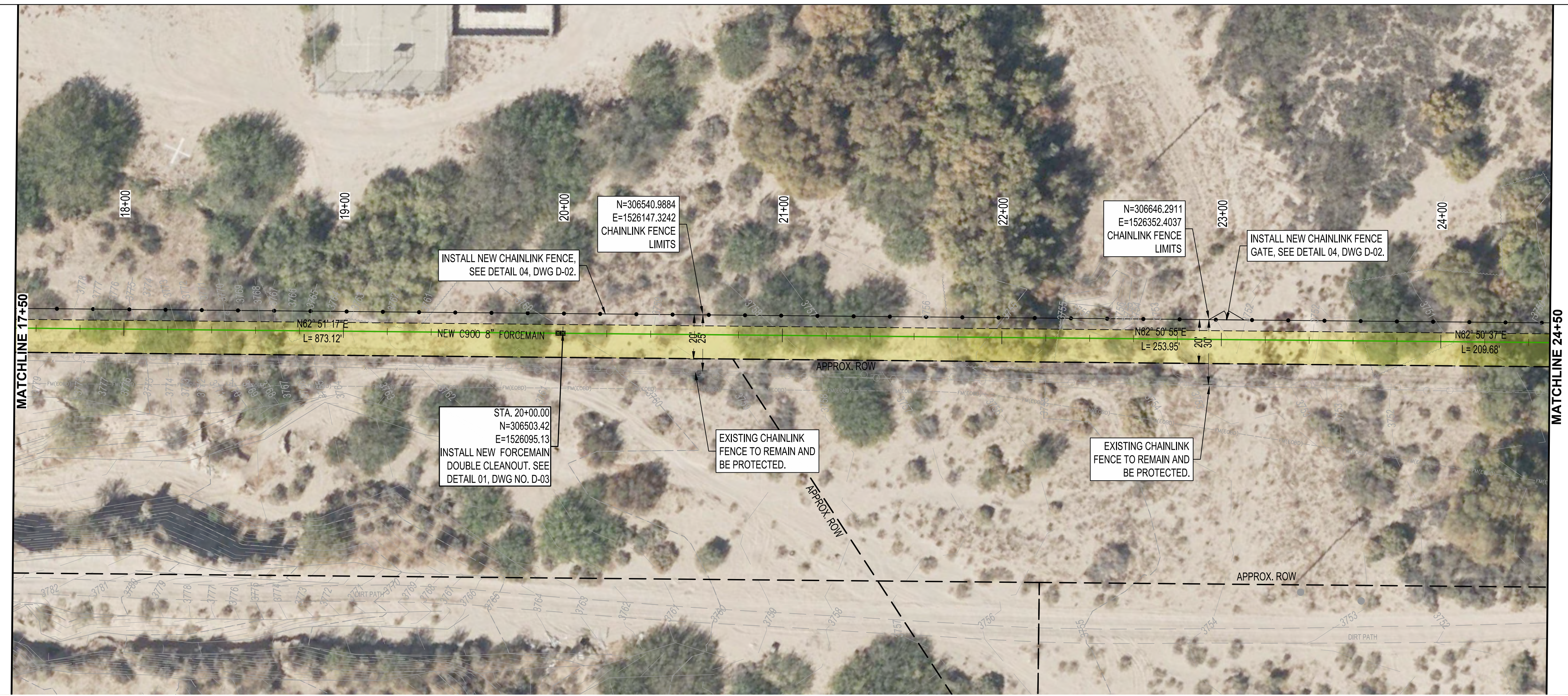
Tue, 4-Apr-2023 - 4:12 pm. Plotted by: JSMELSER
P:\2022\316\CP\Plan Production\Drawings\SOUTH LS FM NEW.dwg



AS-BUILT INFORMATION	
CONTRACTOR	DATE
WORK STARTED BY	DATE
INSPECTOR'S ACCEPTANCE BY	DATE
FIELD VERIFICATION BY	DATE
DRAWINGS CORRECTED BY	DATE

ENGINEER'S SEAL

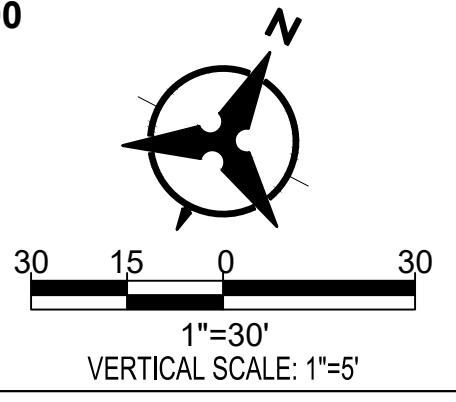
PRELIMINARY
95%
NOT FOR
CONSTRUCTION



CONSTRUCTION KEYED NOTES:

- ENGINEER MADE EVERY EFFORT TO CORRECTLY SHOW EXISTING CONDITIONS BASED ON AVAILABLE INFORMATION PROVIDED BY OWNER AND FIELD MEASUREMENTS. CONTRACTOR TO FIELD VERIFY LOCATION OF EXISTING UTILITIES BEFORE CONSTRUCTION. EXISTING UTILITIES WITHIN CONSTRUCTION LIMITS TO REMAIN AND BE PROTECTED DURING CONSTRUCTION UNLESS OTHERWISE NOTED.
- NEW 8" FORCEMAIN TO INCLUDE CLEANOUTS PER CLEANOUT DETAILS DWG NO. D-03, SHEET 39.
- NEW 8" FORCEMAIN TO HAVE A MINIMUM COVER OF 4-FT.

**1 SOUTH LIFT STATION FORCEMAIN ALIGNMENT
STA 17+50.00 TO STA 24+50.00**



CAUTION:
NOTE THAT ALL EXISTING UTILITIES MAY NOT BE SHOWN HEREON AND THAT ANY EXISTING UTILITIES THAT ARE SHOWN ARE IN "APPROXIMATE LOCATION ONLY". IT SHALL BE THE RESPONSIBILITY OF THE CONTRACTOR TO CONTACT ALL THE UTILITY OWNERS AND TO CONDUCT ALL NECESSARY FIELD INVESTIGATIONS PRIOR TO ANY EXCAVATION TO DETERMINE THE ACTUAL LOCATIONS OF UTILITIES AND OTHER IMPROVEMENTS.



**CAMINO REAL REGIONAL UTILITY AUTHORITY
NORTH WASTEWATER COLLECTION SYSTEM IMPROVEMENTS
SOUTH LIFT STATION FORCEMAIN ALIGNMENT
STA 17+50.00 TO STA 24+50.00**

REVISIONS

NO.	DATE	DESCRIPTION

DESIGN	DESIGNED BY	CHECKED BY	DRAWN BY
	J.M.	M.T.	J.S.

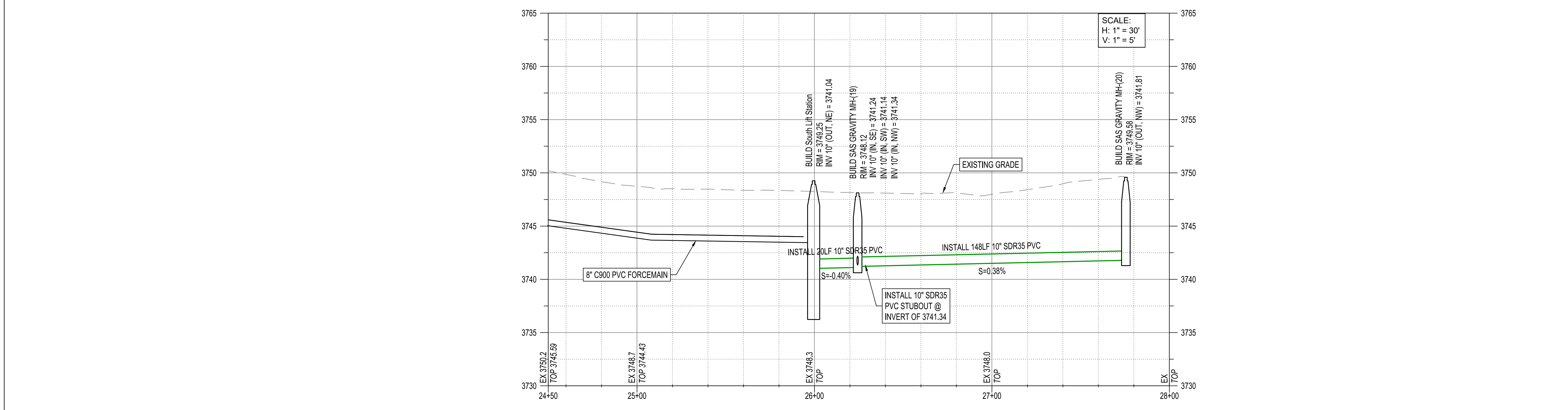
NOTICE OF EXTENDED PAYMENT PROVISION:
THIS CONTRACT ALLOWS THE OWNERS TO MAKE PAYMENT WITHIN 45 DAYS AFTER SUBMISSION OF AN UNDISPUTED REQUEST FOR PAYMENT



AS-BUILT INFORMATION						
CONTRACTOR	DATE	DATE	DATE	DATE	DATE	DATE

ENGINEER'S SEAL

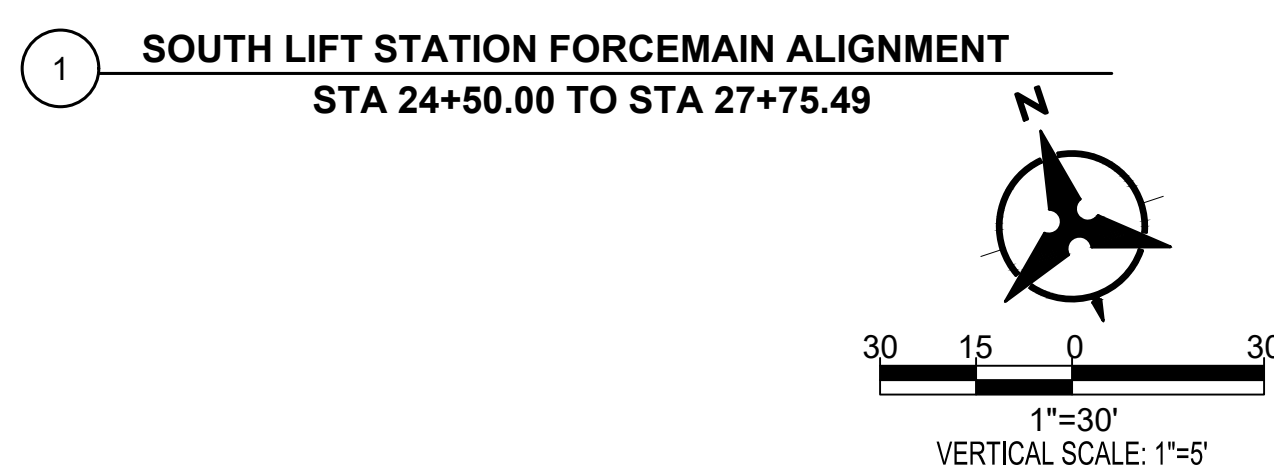
PRELIMINARY
95%
NOT FOR
CONSTRUCTION



REVISIONS

NO.	DATE					

- # **CONSTRUCTION KEYED NOTES:**
- ENGINEER MADE EVERY EFFORT TO CORRECTLY SHOW EXISTING CONDITIONS BASED ON AVAILABLE INFORMATION PROVIDED BY OWNER AND FIELD MEASUREMENTS. CONTRACTOR TO FIELD VERIFY LOCATION OF EXISTING UTILITIES BEFORE CONSTRUCTION. EXISTING UTILITIES WITHIN CONSTRUCTION LIMITS TO REMAIN AND BE PROTECTED DURING CONSTRUCTION UNLESS OTHERWISE NOTED.
 - NEW 8" FORCEMAIN TO INCLUDE CLEANOUTS PER CLEANOUT DETAILS DWG NO. D-03, SHEET 39.
 - NEW 8" FORCEMAIN TO HAVE A MINIMUM COVER OF 4-FT.



CAUTION:
NOTE THAT ALL EXISTING UTILITIES MAY NOT BE SHOWN HEREON AND THAT ANY EXISTING UTILITIES THAT ARE SHOWN ARE IN "APPROXIMATE LOCATION ONLY". IT SHALL BE THE RESPONSIBILITY OF THE CONTRACTOR TO CONTACT ALL THE UTILITY OWNERS AND TO CONDUCT ALL NECESSARY FIELD INVESTIGATIONS PRIOR TO ANY EXCAVATION TO DETERMINE THE ACTUAL LOCATIONS OF UTILITIES AND OTHER IMPROVEMENTS.



**CAMINO REAL REGIONAL UTILITY AUTHORITY
NORTH WASTEWATER COLLECTION SYSTEM IMPROVEMENTS
SOUTH LIFT STATION FORCEMAIN ALIGNMENT
STA 24+50.00 TO STA 27+75.49**

BHI PROJECT NO.	20220316	DWG NO.	C-18	SHEET	23	OF	62
-----------------	----------	---------	------	-------	----	----	----