

RESOLUTION

Gadsden Independent School District

Participation in Local Government Road Fund Program Administered
By New Mexico Department of Transportation

WHEREAS, the Gadsden Independent School District and the New Mexico Department of Transportation have entered into a joint and coordinated effort in Cooperative Agreement Project No. SP-1-09 (969) and Control Number HW2 M100020 known as LGRF Project for 2008-2009.

WHEREAS, the total cost of the project will be \$31,016.00 to be funded in proportional share by the parties hereto as follows:

a. New Mexico Department of Transportation's share shall be 75% or \$23,262.00

and

b. Gadsden Independent School District's proportional matching share shall be 25% or \$7,754.00

TOTAL PROJECT COST IS \$31,016.00

Gadsden Independent School District shall pay all costs, which exceed the total amount of \$31,016.00.

NOW therefore, be it resolved in official session that Gadsden Independent School District determines, resolves, and orders as follows:

That the project "Student Drop-off at Northern Pre-Kinder at La Mesa, NM" for this Cooperative agreement is adopted and has a priority standing. (See attached drawing and estimate)

The agreement terminates on December 31, 2009 and the Gadsden Independent School District incorporates all the agreements, covenants, and understandings between the parties hereto concerning the subject matter hereof, and all such covenants, agreements and understandings have been merged into the written agreement.

NOW therefore, be it resolved by the Gadsden Independent School District to enter into Cooperative Agreement Project Number SP-1-09 (969), Control Number HW2 M100020 with the New Mexico Department of Transportation for LGRF Project for year 2008-2009 to "Design, subgrade prep, base course, PM BP, curb, sidewalk, fencing, signs, marking and drainage of new parking and student drop-off at Northern Pre-Kinder at La Mesa, NM" within the control of the Gadsden Independent School District in Sunland Park/Doña Ana, New Mexico.

Maria E. Saenz, School Board President

Date

Manuela Huerta, School Board Secretary

Date

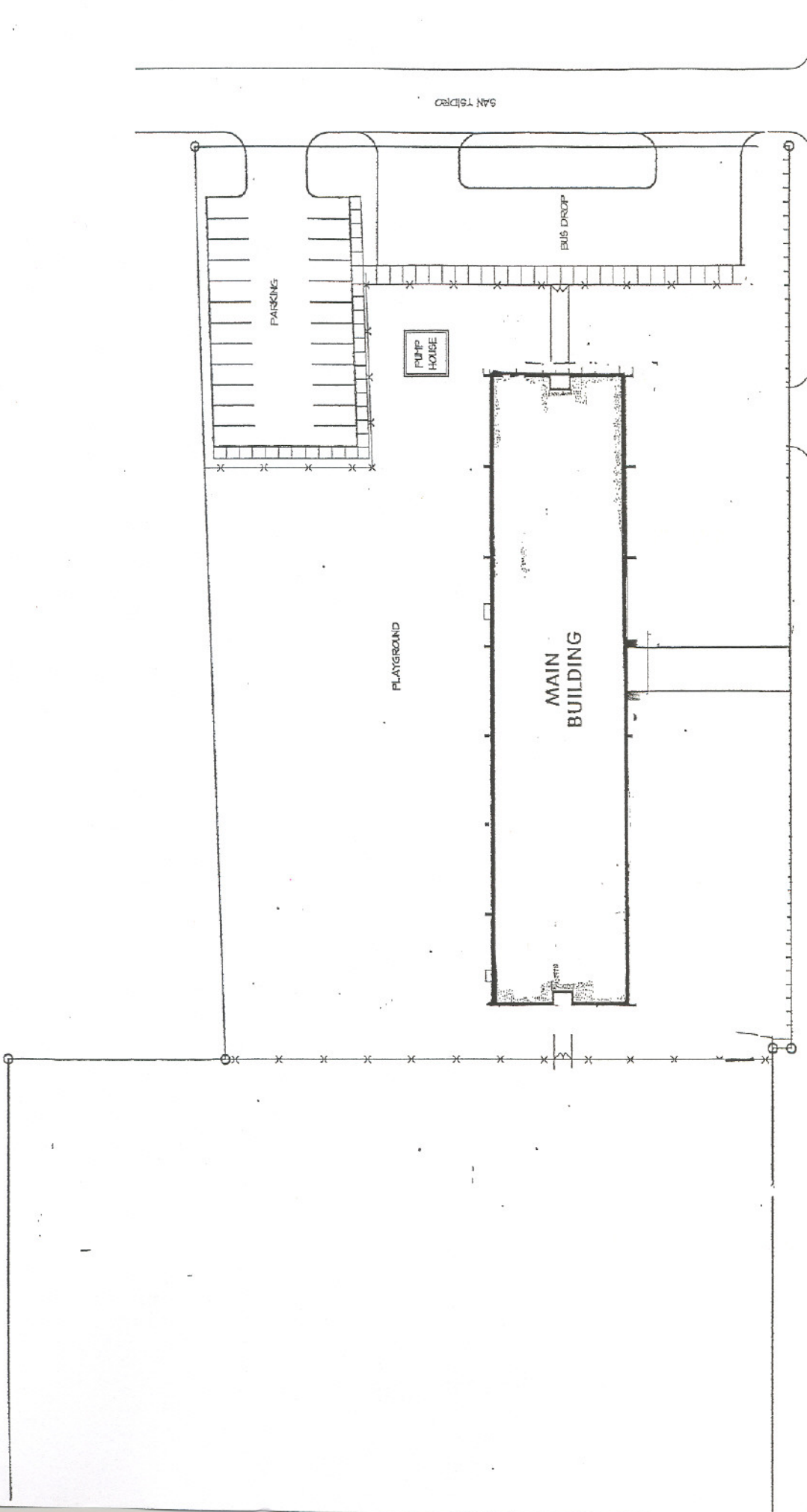
ENTITY: Gadsden Independent School District

SCOPE OF WORK: Bus Drop-off & Faculty Parking for La Mesa Elementary School

ROUTE TERMINI: Enter & Exit off Principal St. in La Mesa

ITEM NO.	ITEM DESCRIPTION	UNIT	ESTIMATED QUANTITY	UNIT COST	TOTAL COST
1	Mobilization / Demobilization	LS	1	\$ 34,500.00	\$ 34,500
2	Demolition	LS	1	\$ 18,000.00	\$ 18,000
3	8" Subgrade Prep.	SY	1500	\$ 1.75	\$ 2,625
4	6" Base Course	SY	1500	\$ 8.50	\$ 12,750
5	Prime Coat	SY	1500	\$ 0.85	\$ 1,275
6	3 1/2" PMBP-Grade B	SY	1500	\$ 12.50	\$ 18,750
7	Curb & Gutter	LF	375	\$ 14.50	\$ 5,438
8	Concrete Sidewalk	SF	2230	\$ 8.75	\$ 19,513
9	Rip Rap Lined Ponding	CY	45	\$ 625.00	\$ 28,125
10	Chain Link Fencing	LF	250	\$ 18.00	\$ 4,500
11	Marking & Signage	LS	1	\$ 4,500.00	\$ 4,500
12	Utility Relocates	LS	1	\$ 5,500.00	\$ 5,500
13	Material Testing	LS	1	\$ 3,500.00	\$ 3,500
TOTAL					\$ 158,975
CONTINGENCY				10%	\$ 15,898
NMGRT on Construction				5.9375%	\$ 10,164
TOTAL CONSTRUCTION					\$ 185,037
Engineering Fees					\$ 22,000
Reimbursable					\$ 1,500
NMGRT of Fees				7.125%	\$ 1,528
TOTAL FEES					\$ 25,028

FINAL TOTAL PROJECT COST	\$	210,064
75% NMSHTD SHARE	\$	157,548
25% (GISD) SHARE	\$	52,516



BARELA STREET



SITE PLAN
 SCALE: 1" = 30'-0"

LA MESA ELEMENTARY SCHOOL

GADSDEN INDEPENDENT SCHOOL DISTRICT