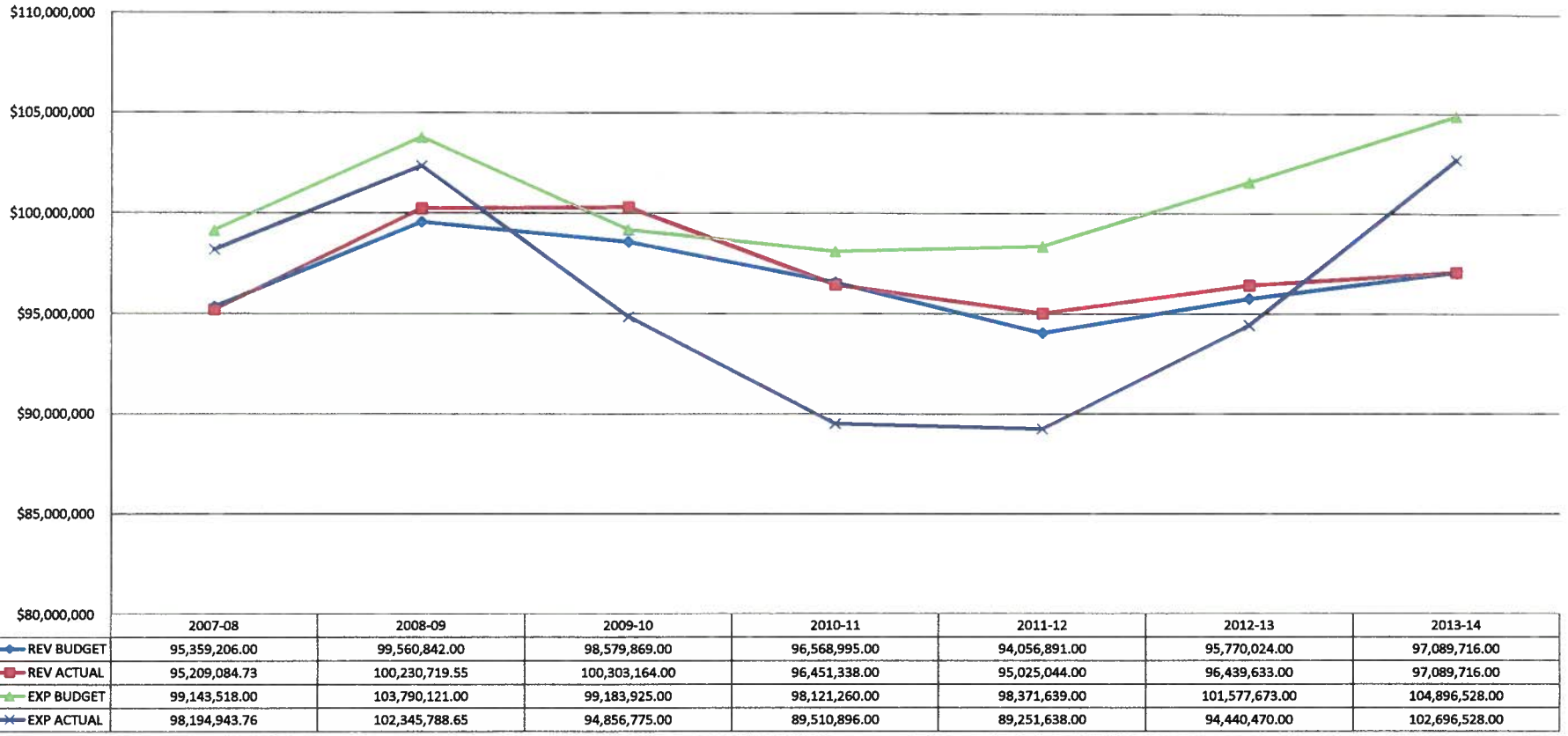


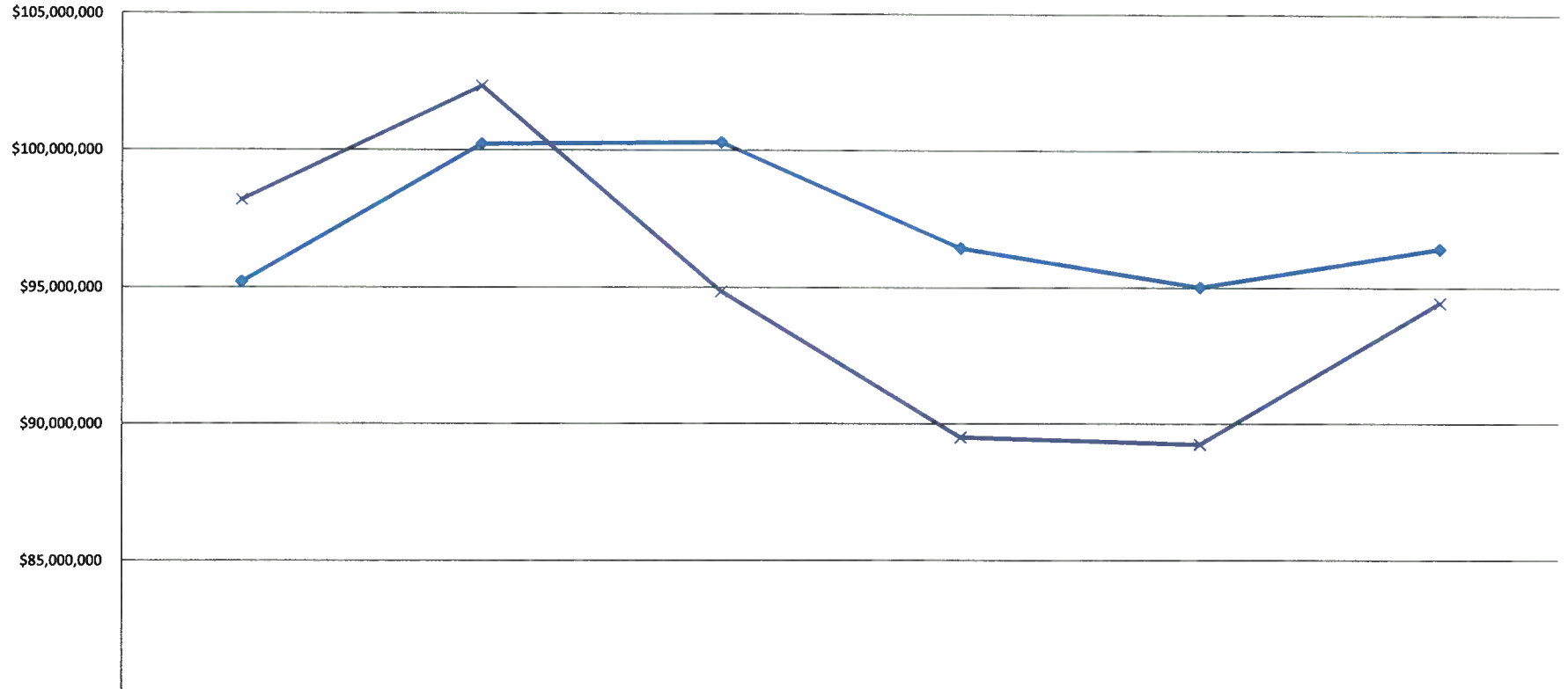
GADSDEN INDEPENDENT SCHOOL DISTRICT
2013-14 OPERATING BUDGET
MAY 23, 2013
EXECUTIVE SUMMARY

	<u>2013-14</u> <u>Proposed Budget</u>	<u>2012-13</u> <u>Adjusted Budget</u>
General Funds:		
Operational Fund	\$ 104,896,528	\$ 101,577,673
Pupil Transportation Fund	4,779,275	5,072,780
Instructional Materials Fund	725,965	1,219,812
	<u>\$ 110,401,768</u>	<u>\$ 107,870,265</u>
Special Revenue Funds:		
Food Services Fund	\$ 13,600,241	\$ 14,826,066
Athletics Fund	293,551	322,173
Non-Instructional Support Fund	1,005,109	986,267
Federal Flow Through Grants	12,601,621	17,687,743
Federal Direct Grants	880,250	1,000,237
Local Grants	1,363,490	1,377,006
State Flow Through Grants	2,046,292	2,220,839
State Direct Grants	341,703	364,500
Combined Local/State Grants	214,087	208,993
	<u>\$ 32,346,344</u>	<u>\$ 38,993,824</u>
Capital Projects Funds:		
Bond Building	\$ 38,007,795	\$ 34,771,861
PSCOC Fund	1,880,026	1,768,595
Special Capital Outlay - Local	-	1,351
Special Capital Outlay - State	15,963	448,962
Capital Improvements SB-9	8,704,992	8,800,485
Ed. Technology Equip. Act	3,250,902	2,724,361
	<u>\$ 51,859,678</u>	<u>\$ 48,515,615</u>
Debt Service Funds:		
General Obligation Bond Debt Service	\$ 19,098,863	\$ 17,829,573
Ed. Tech Debt Service	5,153,782	5,116,651
	<u>\$ 24,252,645</u>	<u>\$ 22,946,224</u>
Total Operating Budget	<u><u>\$ 218,860,435</u></u>	<u><u>\$ 218,325,928</u></u>
Operational and Stabilization Funds:		
Operational Fund Projected Cash Balance	\$ 7,806,812	\$ 5,807,649
Operational Fund Projected Revenues	97,089,716	95,668,024
Emergency Supplemental	-	-
Operational Fund Resources	<u>\$ 104,896,528</u>	<u>\$ 101,475,673</u>
Fixed Cost Appropriation	\$ -	\$ 102,000.00
Stabilization Funds for Operational Expenditures	-	-
Education Jobs Funds for Operational Expenditures	-	-
Total Operational Resources	<u><u>\$ 104,896,528</u></u>	<u><u>\$ 101,577,673</u></u>

**GISD OPERATIONAL FUND REVENUES AND EXPENDITURES
2007-08 TO 2013-14 BUDGET AND ACTUAL**



**GISD OPERATIONAL FUND REVENUES AND EXPENDITURES
2007-08 TO 2011-12 ACTUAL (2012-13 ESTIMATED)**

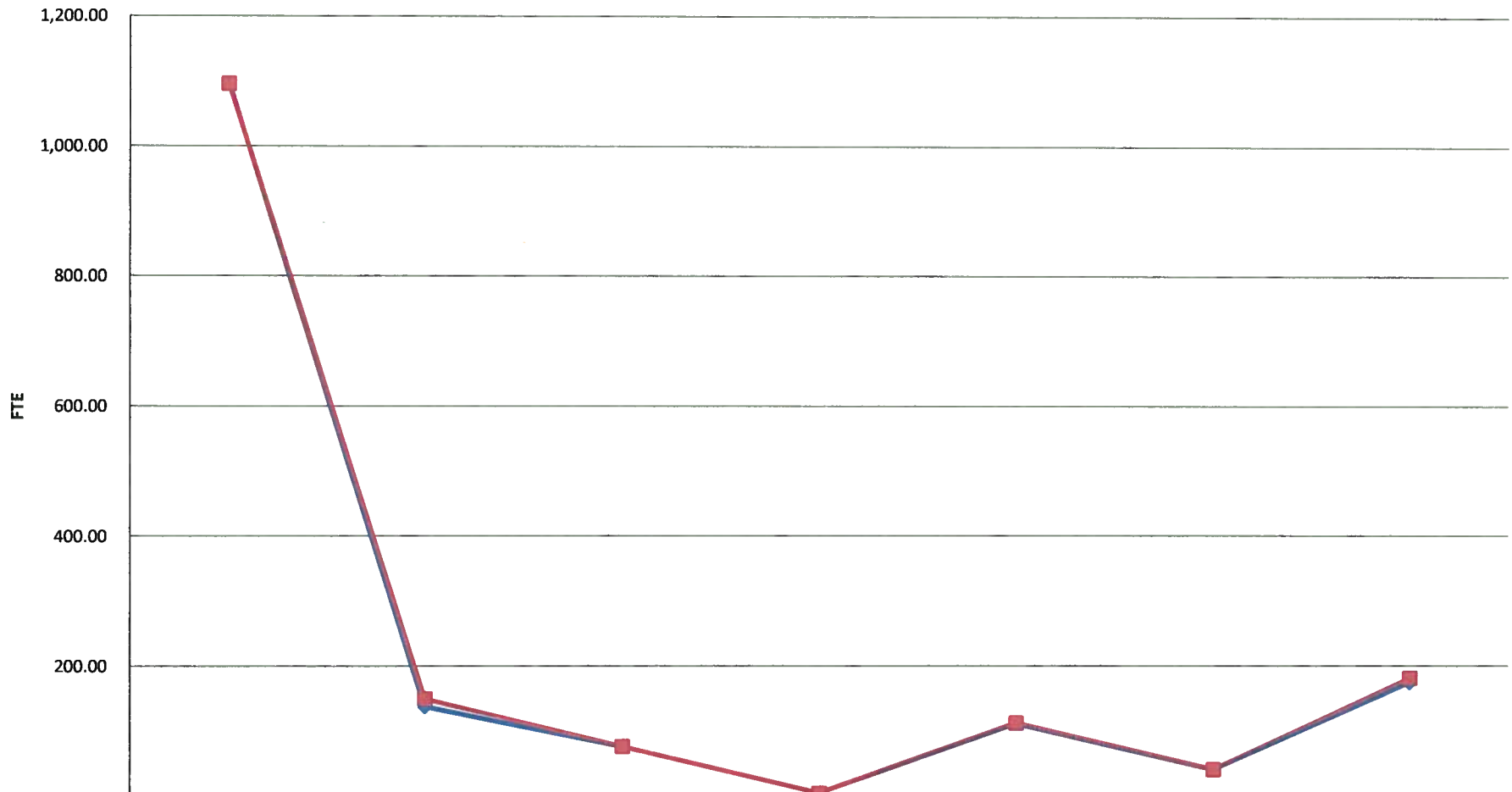


	2007-08	2008-09	2009-10	2010-11	2011-12	2012-13
◆ REV ACTUAL	95,209,084.73	100,230,719.55	100,303,164.00	96,451,338.00	95,025,044.00	96,439,633.00
✕ EXP ACTUAL	98,194,943.76	102,345,788.65	94,856,775.00	89,509,760.00	89,251,638.00	94,440,470.00

**GISD OPERATIONAL FUND STAFF FTE
2007-08 TO 2011-12 REPORTED (2012-13 & 2013-14 ESTIMATED)**

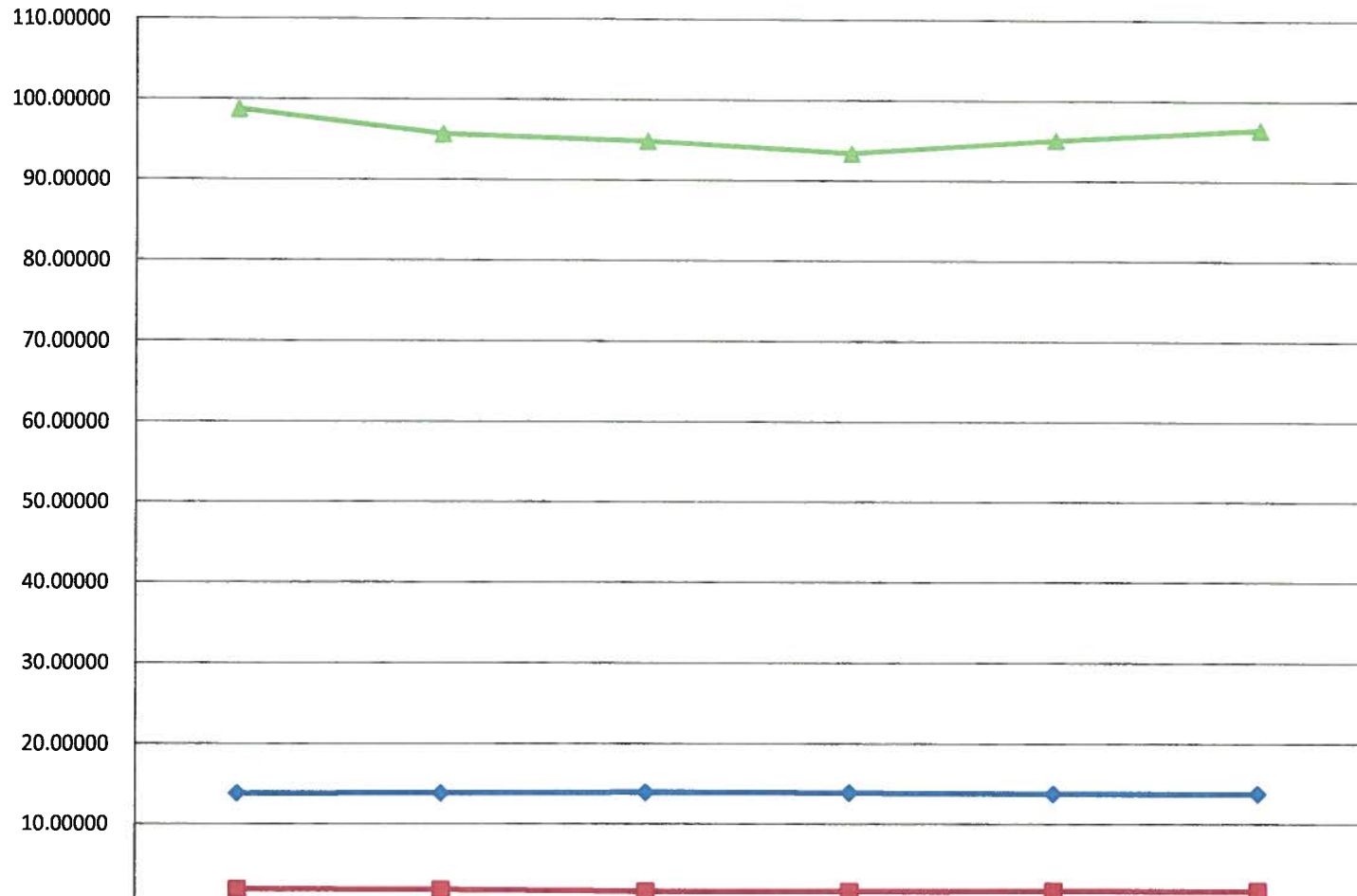


**GISD OPERATIONAL FUND STAFF FTE
2012-13 ESTIMATED ACTUAL & 2013-14 BUDGETED**



	DIRECT INST	INST SUPPORT-STDNT	INST SUPPORT-INSTRCTN	GENERAL ADMINISTRATION	SCHOOL ADMINISTRATION	CENTRAL SERVICES	OP & MAINT OF PLANT
2012-13	1,097.22	137.13	75.74	3.50	111.00	39.50	174.10
2013-14	1,096.01	149.66	75.74	3.25	112.00	39.75	181.10

GISD OPERATIONAL FUND STUDENT MEMBERSHIP, FTE AND SEG 2008-09 TO 2012-13 REPORTED (2013-14 ESTIMATED)



	2008-09	2009-10	2010-11	2011-12	2012-13	2013-14
80/120 AVG MEMBERSHIP (1,000)	13.81425	13.81650	13.94325	13.88550	13.77300	13.77300
FTE (1,000)	1.87508	1.81898	1.59334	1.59602	1.63819	1.65751
SEG (\$100,000)	98.758384	95.731197	94.894669	93.445971	95.140497	96.486985