



Discussion Items

December 2022 Regular Board Meeting



Proposed Consolidation of Sunland Park Elementary

- Declining Enrollment in Sunland Park, Desert View and Riverside
- Future facility investments
- Transportation Expenses: current and future
- Potential Growth in Santa Teresa Area
- Right Sizing our Staff to match student enrollment: Gradual Process
- Begin the 2023-24 school year
- Capacity DVE: 566 RSE: 679; Available Space: 362; SPE: 225
- Progressive Phase out of facility: Temporary PreK Center, Temporary Middle School Facility, additional construction projects

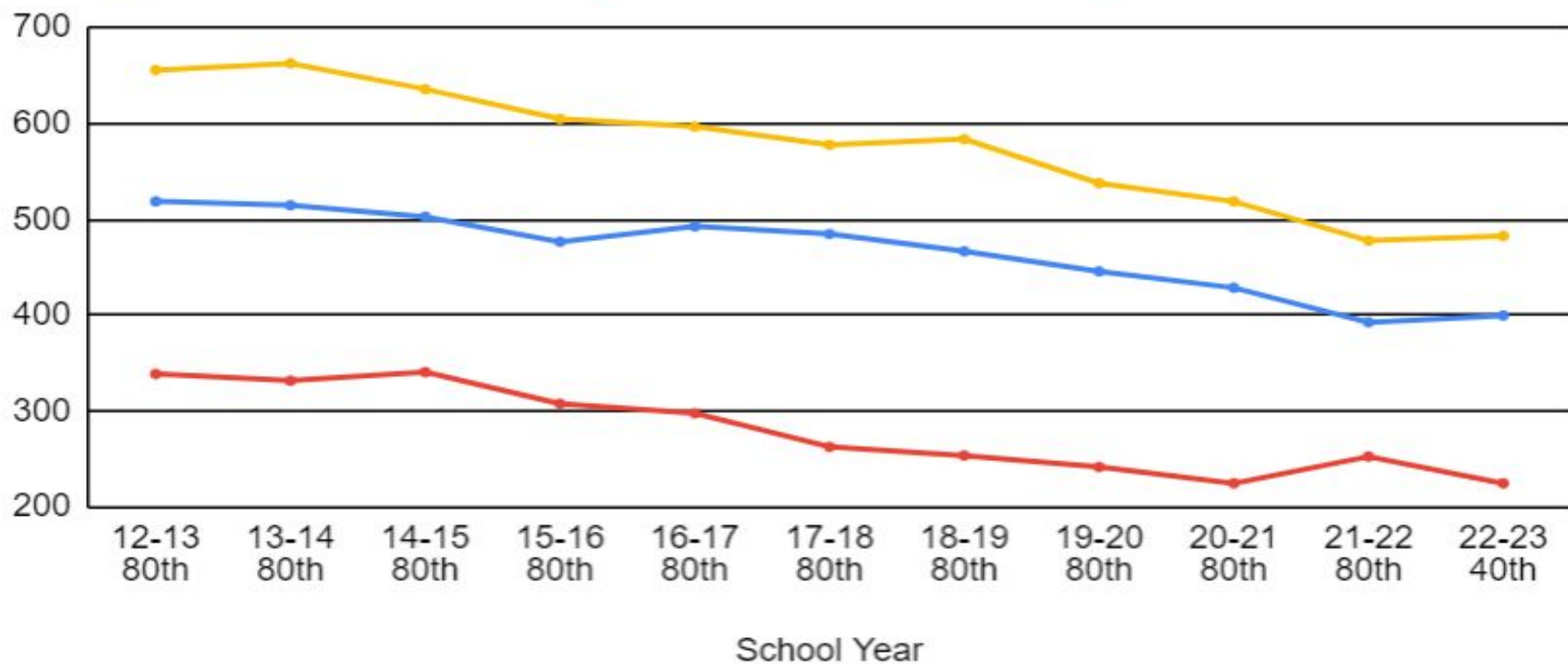
| | Desert View | Sunland Park | Riverside |
|-------------|--------------------|---------------------|------------------|
| School Year | Total Enrollment | Total Enrollment | Total Enrollment |
| 12-13 80th | 519 | 339 | 656 |
| 13-14 80th | 515 | 332 | 663 |
| 14-15 80th | 503 | 341 | 636 |
| 15-16 80th | 477 | 308 | 605 |
| 16-17 80th | 493 | 298 | 597 |
| 17-18 80th | 485 | 263 | 578 |
| 18-19 80th | 467 | 254 | 584 |
| 19-20 80th | 446 | 242 | 538 |
| 20-21 80th | 429 | 225 | 519 |
| 21-22 80th | 393 | 253 | 478 |
| 22-23 40th | 400 | 225 | 483 |

Enrollment Data

10 Year Enrollment Patterns (80 Day)



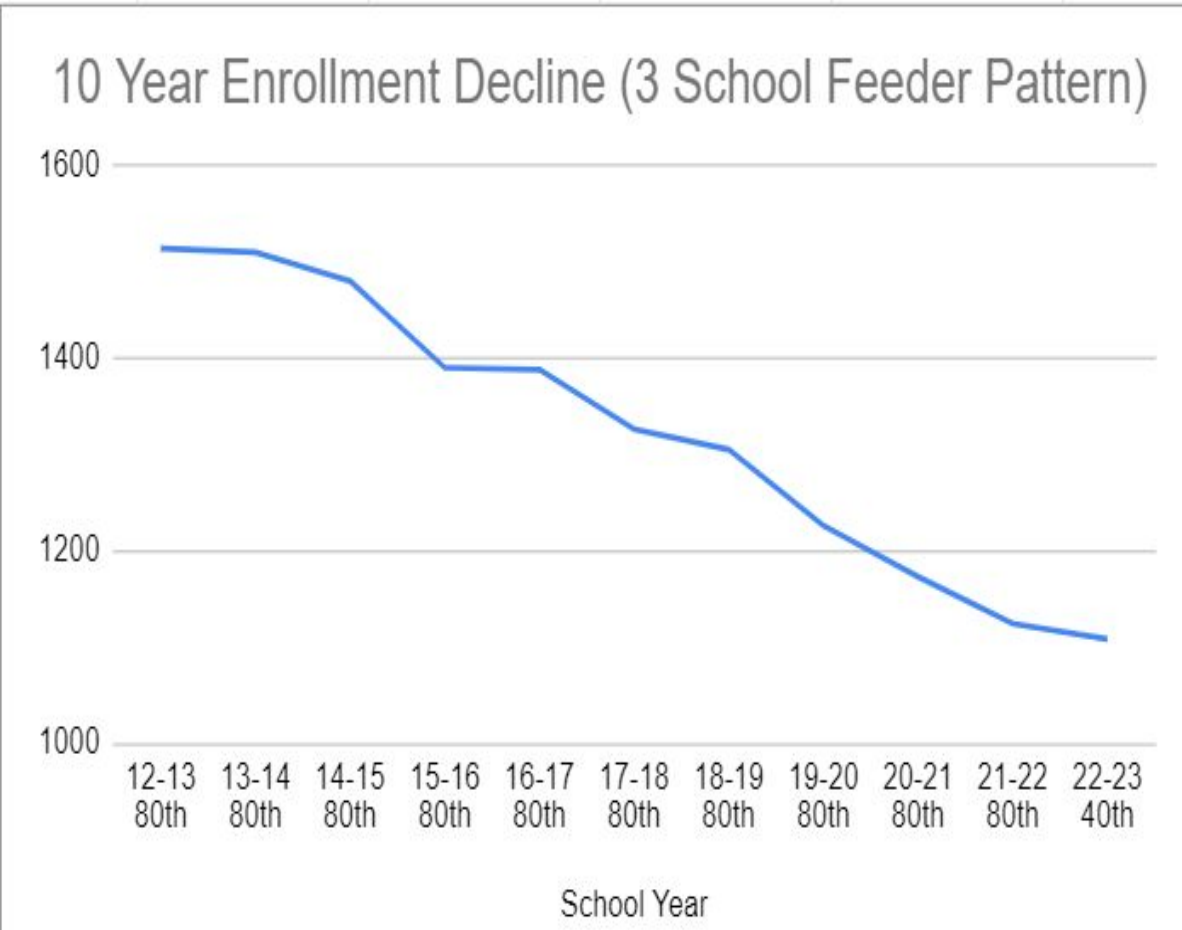
● Desert View Elementary ● Sunland Park Elementary ● Riverside Elementary



SPE/ DVE/ RSE

Combined Enrollment: SPE, DVE, and RSE

| School Year | Enrollment |
|-------------|------------|
| 12-13 80th | 1514 |
| 13-14 80th | 1510 |
| 14-15 80th | 1480 |
| 15-16 80th | 1390 |
| 16-17 80th | 1388 |
| 17-18 80th | 1326 |
| 18-19 80th | 1305 |
| 19-20 80th | 1226 |
| 20-21 80th | 1173 |
| 21-22 80th | 1124 |
| 22-23 40th | 1108 |





Sunland Park Elementary: Timeline

- Discussion Item at Regular Board Meeting 9/22/2022
- Discussion Item at Regular Board Meeting 11/10/2022
- Meeting with SPE Staff 12/6/2022
- Community Meeting (Notifications Sent) 12/13/2022
- Proposed Action by GISD Board 1/12/2023
- Attendance Zones may need additional adjustments TBD



Additional Documentation

- Answered questions from staff
- Staff request to meet regularly to keep them updated (Wednesdays)
- Agreed to provide a campus tour of DVE
- Allow parents from SPE who request Dual Language to attend Riverside Elementary
- 6th Grade STEM Academy: STMS

Questions/ Concerns/ Ideas